



Thermal Imaging Camera

Industry temperature measurement

TEi Series

160×120 Uncool FPA detector

Low cost, CCD Came, rarotatable LCD

50Hz realtime measurement, portable



www.dali-tech.com

TEi Series Portable Thermal Imaging Camera



Rotatable LCD

TEi is not only an affordable IR camera, it also combine the traits of economical and practical. With its 2.8" LCD rotatable screen and JPEG storage, the camera symbolizes easy-to-use, standard and professional, developing for those applications that need instant infrared troubleshooting in power plant, petrochemicals, scientific research, fire fighting, and building inspection, metallurgy, etc.



Laser Pointer
CCD Camera



Manual focus



One key operation



Shortcut key



Low power consumption,
3 hours continuous operation

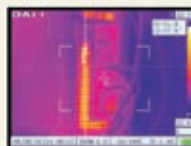


SD card

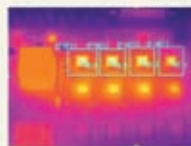
Audio output
Video output

USB

Power connector



Line measurement



Area measurement



Optional Lenses

Parameter

Item	TEi	TEi-S	TEi-P	
Detector characteristics	Detector type	Uncooled FPA microbolometer		
	Array size/format	160x120		
Image characteristics	Field of view/min focus distance	12° x 9°/0.3m		
	Spatial resolution (IFOV)	1.3mrad		
	Thermal sensitivity	0.12°C@30°C		
	Frame rate	50Hz	50/60Hz	
	Focus	Manual		
Image display	Built-in visual camera	300,000 pixels		
	LCD	High-resolution color 2.8" LCD		
Measurement	Temperature ranges	-20°C~+250°C	-20°C~+250°C, optional up to +500°C	-20°C~+500°C, optional up to +1000°C
	Accuracy	± 2 °C or ± 2% of reading, whichever is greater		
	Measurement correction	Automatic/manual		
	Measurement mode	Movable spot, Movable area (maximum, minimum and average temperatures), Isotherm, Alarm (voice, color)	Up to 4 movable spots, Up to 3 movable areas (maximum, minimum and average temperatures), Line profile, Isotherm, Temperature difference, Alarm(voice, color)	
	Color palette	3	8	11
	Image adjustment	Auto/manual gain and brightness		
	Setup functions	Date/time, temperature unit, language		
	Emissivity correction	Variable from 0.01 to 1.0 or select from listings in pre-defined material list		
	Ambient temperature correction	Automatic corrections according to user input		
	Atmospheric transmission correction	N/A	Automatic correction according to user input object distance, relative humidity, ambient temperature	
Image storage	Storage card	Built-in flash memory, Up to 100 images	Built-in flash memory, Up to 2000 images	Built-in flash memory, Up to 5000 images
	Storage mode	Manual single image saving	Automatic/manual single image saving	
	File format-thermal	JPEG, 14 bit thermal image with measurement data		
	File format-visual	JPEG		
Laser pointer	Laser pointer	N/A		Input via built-in microphone Up to 40 seconds of digital voice per image stored with image
	Voice annotation	N/A		
Power supply	Battery type	Class 2, 1mw/635nm(red)		Li-Ion, rechargeable
	Battery operating time	3 hours continuous operation		
	Charging system	Intelligent charger	Intelligent charger or power supply adaptor (optional online charge)	
	Power saving	YES		
	External power	10-15V DC		
	Operating temperature	-15°C~ + 50°C		
Environment	Humidity	≤90% non-condensing		
	Encapsulation	IP54		
	Weight	0.7Kg		
Physical characteristics	Dimensions	197mmx178mmx73mm		
	External DC input	Yes		
Interface	Audio output	N/A	Yes	
	Video output	N/A	PAL/NTSC	
	USB	Image (thermal and visual), measurement data transfer to PC	Image (thermal and visual), measurement data and voice transfer to PC	

▲ The information contained in this document is subject to change without notice